

# ERTMS



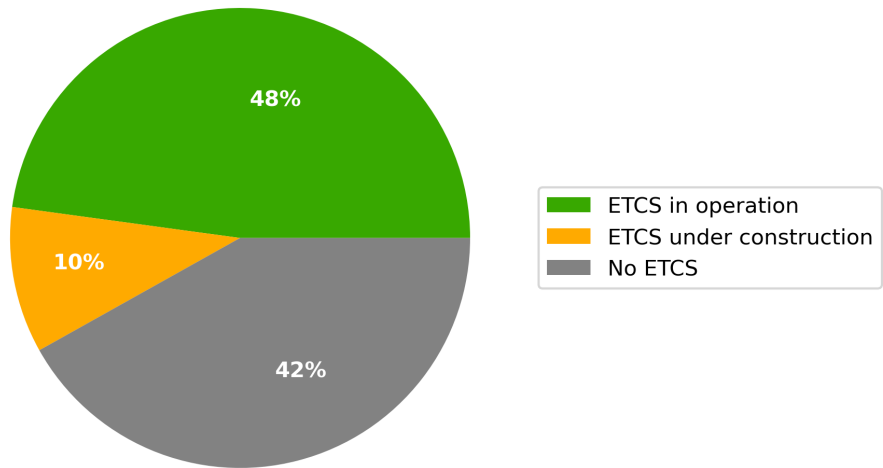
AT | Austria

## ERTMS Deployment data

Date Exported: 21/07/2023

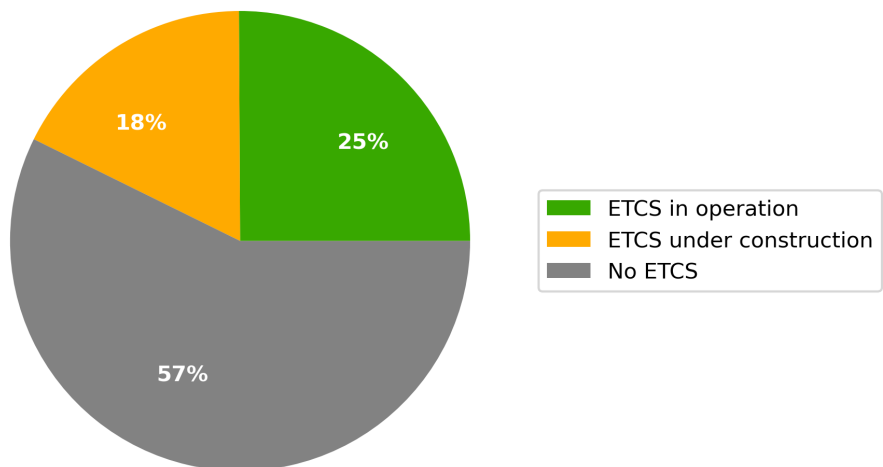
### ETCS DEPLOYMENT

#### ETCS Status (km) by 2023

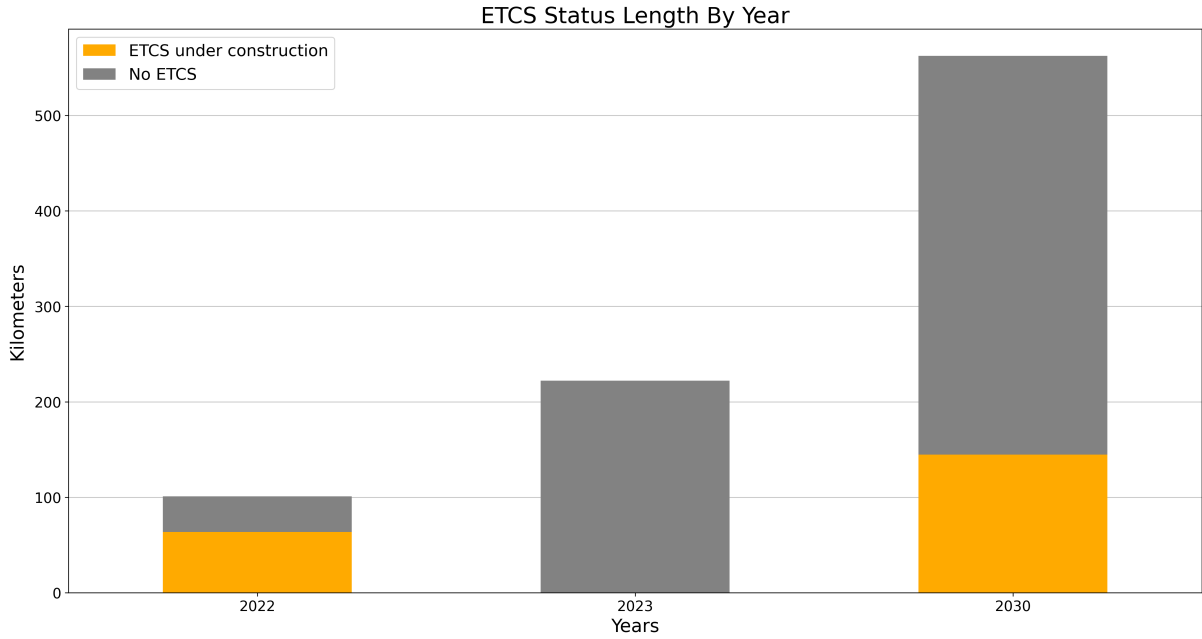


*ETCS current status of CNC lengths expected according to EDP by 2023*

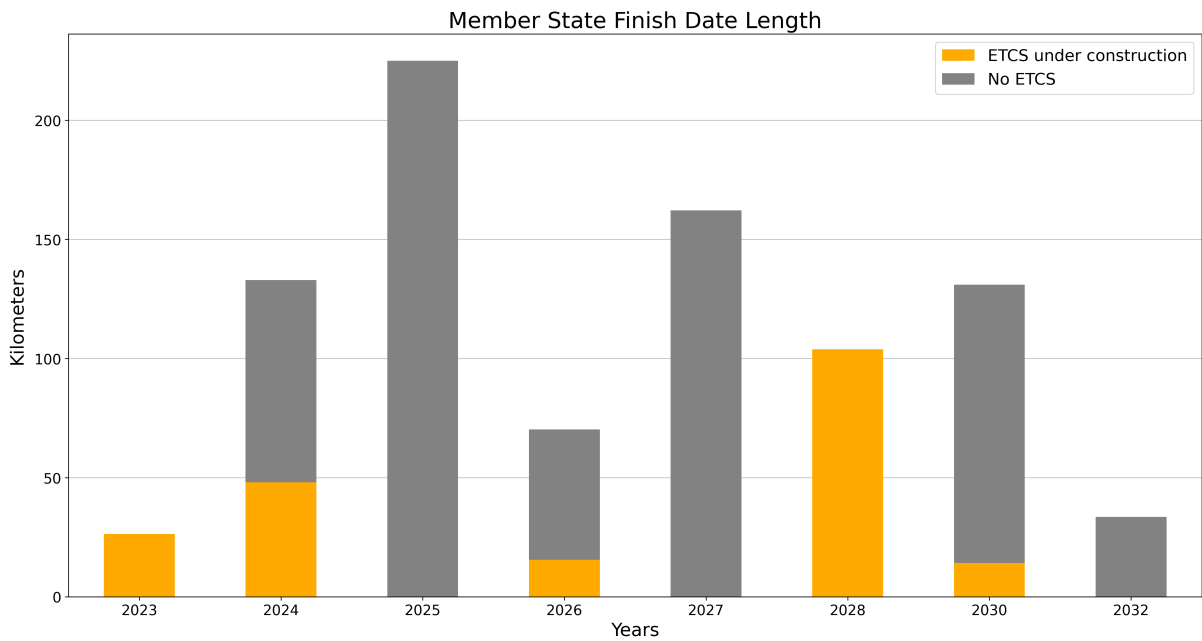
#### ETCS Status (km) by 2030



*ETCS current status of CNC lengths expected according to TEN-T Guidelines by 2030*



*ETCS deployment progress against the EDP targets per year. Note: The 2030 bar includes sections planned in the EDP as "beyond 2023"*



*ETCS current status of CNC lengths per year considering MS plan*

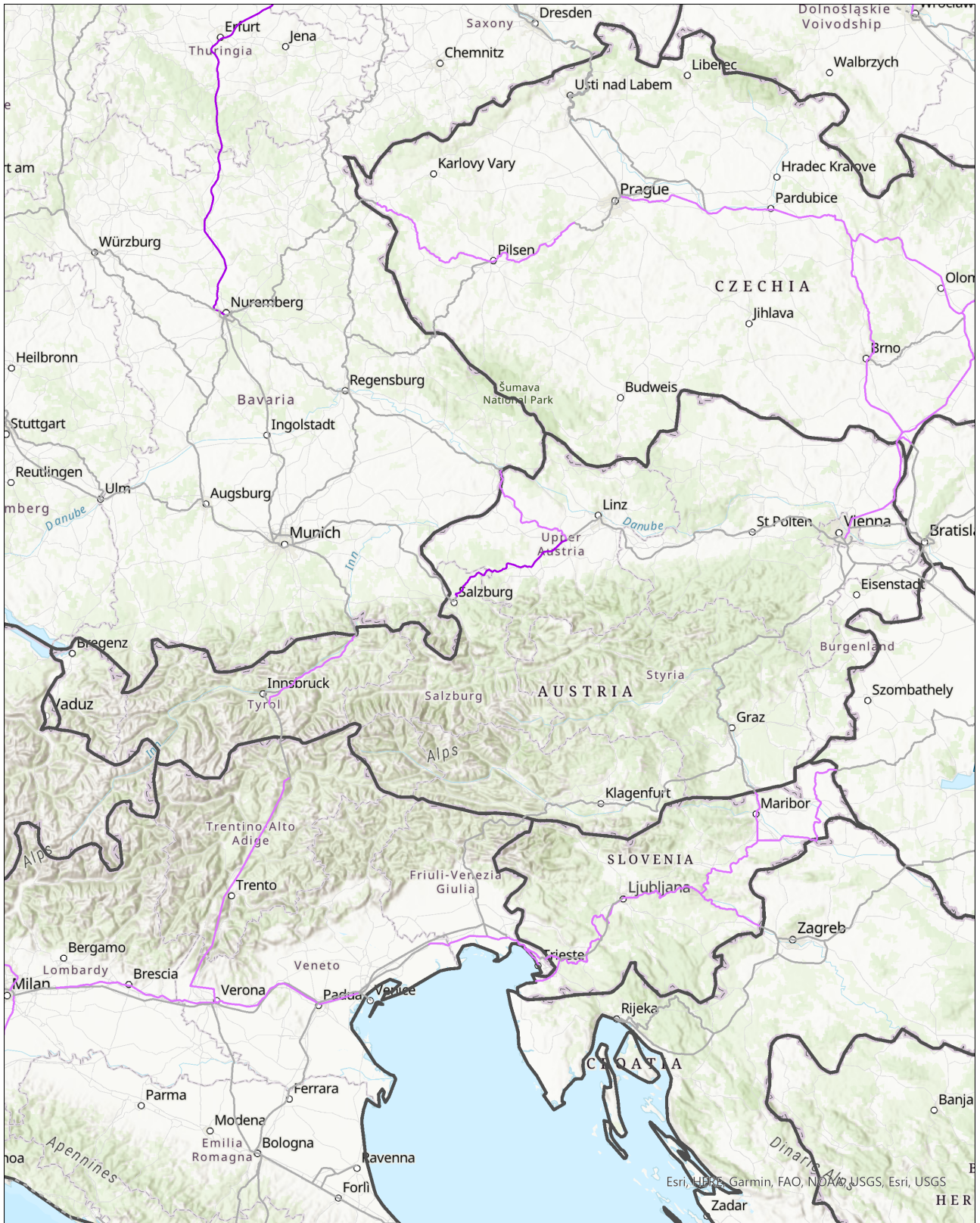


### ETCS Railways Status

- ETCS in operation
- - - ETCS in operation CEF 2
- ETCS under construction
- - - ETCS under construction CEF 2

- No ETCS
- - - No ETCS CEF 2
- Other
- Country boundaries

Overview of the ETCS deployment status (Source: DMT elaboration)



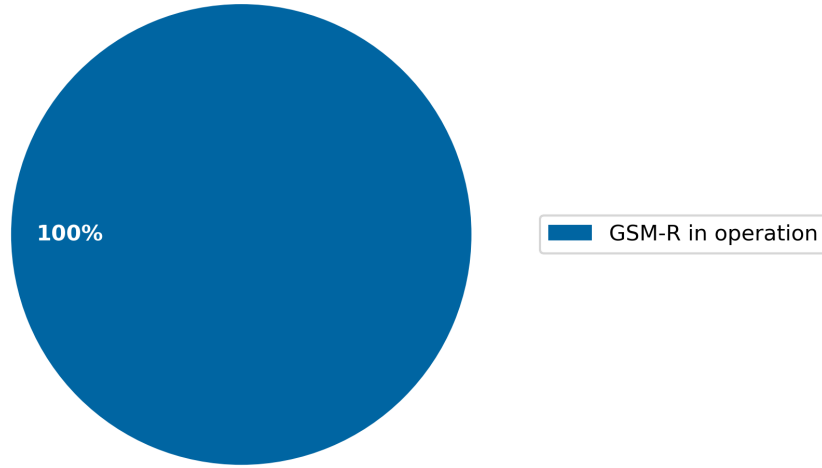
### CEF Project Information

- No CEF Projects
- Works Projects
- Study Projects
- No CEF Projects CEF 2
- Works Projects CEF 2
- Study Projects CEF 2
- Other
- Country boundaries

Overview of the CEF-funded projects (Source: DMT elaboration)

## GSM-R DEPLOYMENT

### GSM-R Status (km)



*GSM-R current status*



### GSM-R Status

- GSM-R in operation
- - - GSM-R in operation CEF 2
- GSM-R under construction

- - - GSM-R under construction CEF 2
- No GSM-R
- - - No GSM-R CEF 2
- Unselected

- - - Unselected CEF 2
- Others
- Country boundaries

Overview of the GSM-R deployment (Source: DMT elaboration)