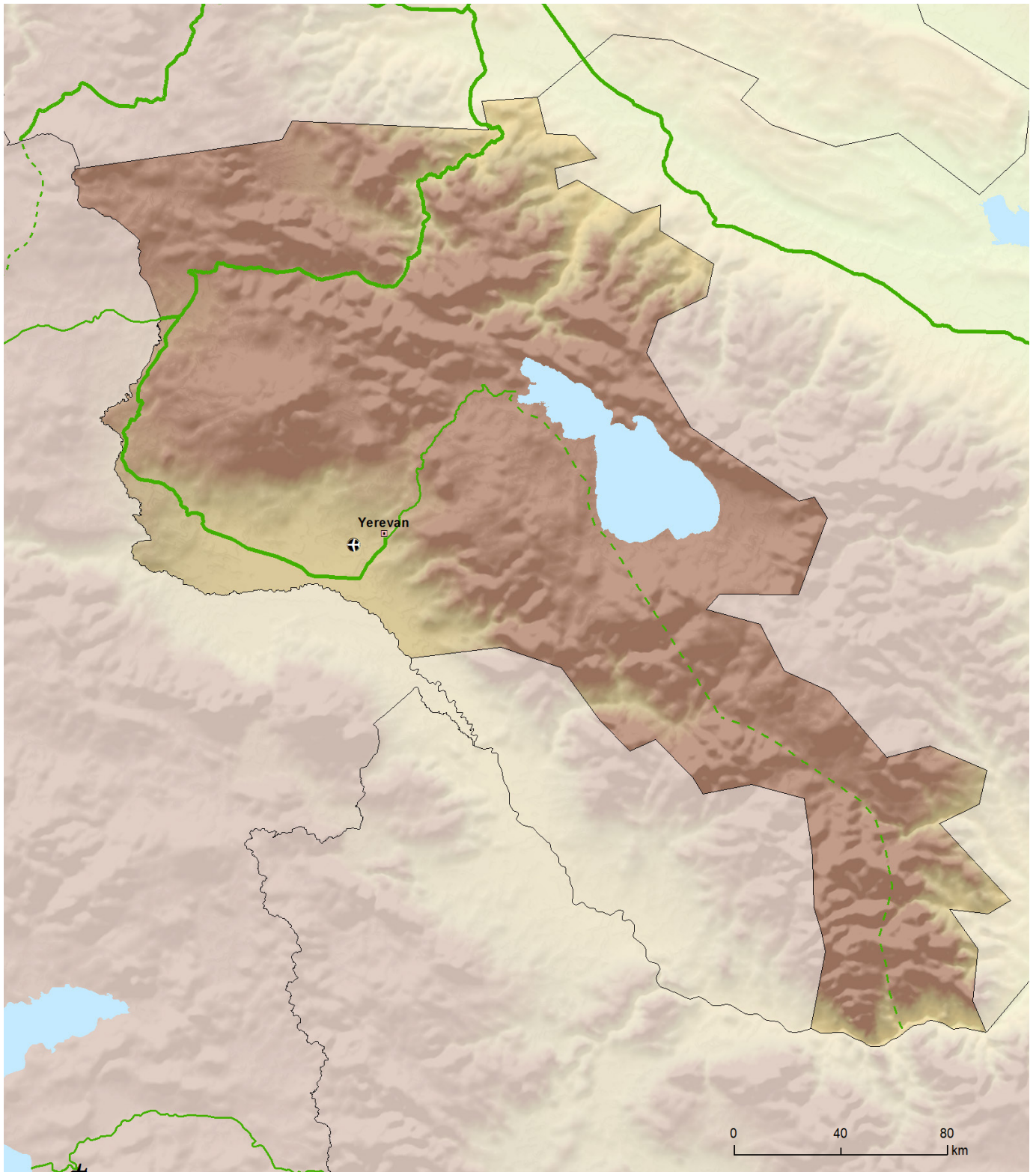




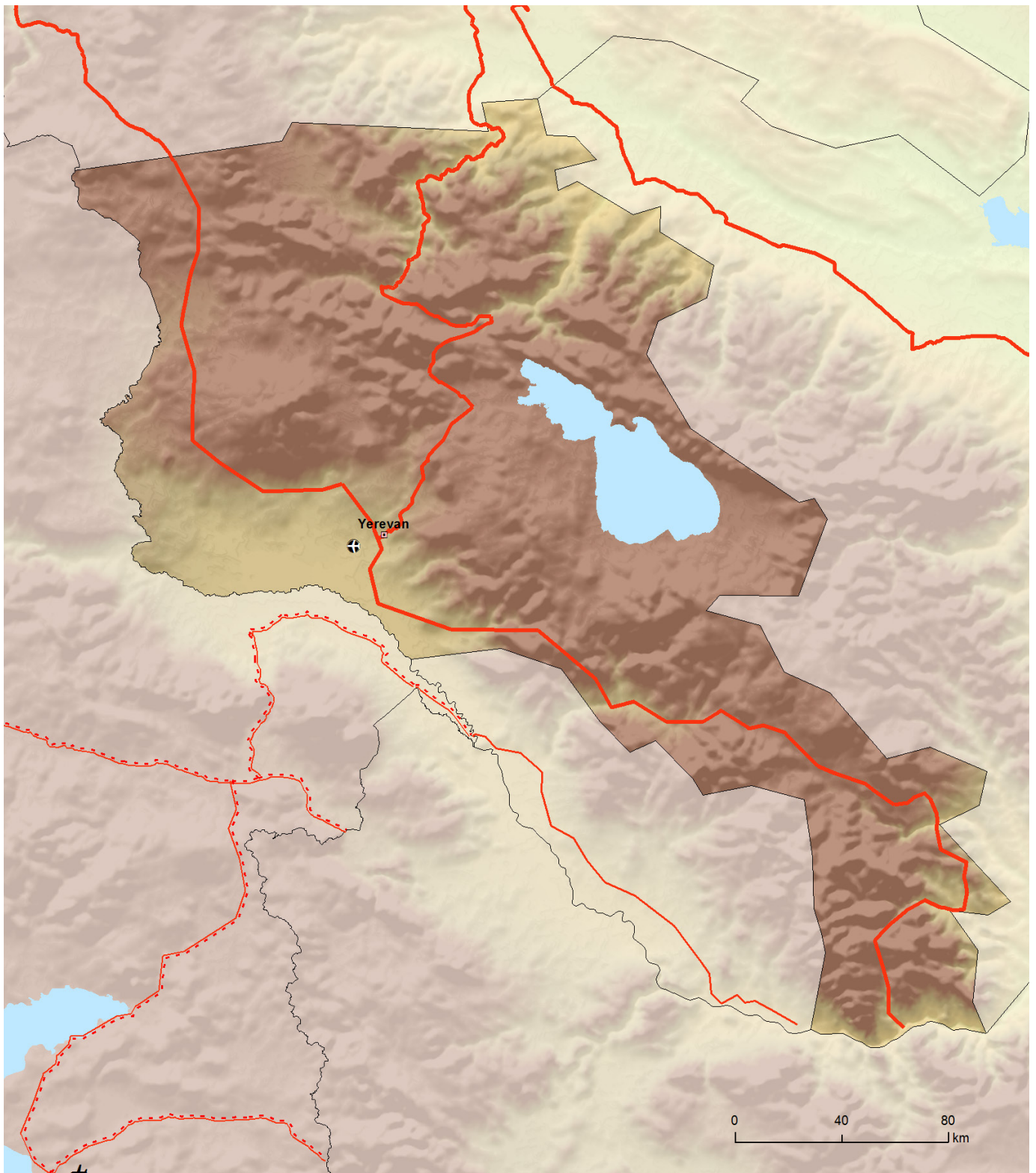
**15.3** Indicative maps of the core network in the Republic of Armenia, railways, ports, rail-road-terminals and airports  
 Comprehensive Network: Railways, ports, rail-road-terminals and airports  
 Core Network: Railways, ports, rail-road-terminals and airports  
**Eastern Partnership Transport Network: Republic of Armenia**



Comprehensive		Core		Comprehensive		Core	
	Conventional rail / Completed		Conventional rail / To be upgraded		Conventional rail / Planned		High speed rail / Completed
	To be upgraded to high speed rail		High speed rail / Planned		Airports		Ports
	RRT		RRT				



### 15.4 Indicative maps of the core network in the Republic of Armenia, roads Comprehensive & Core Networks: Roads, ports, rail-road terminals and airports Eastern Partnership Transport Network: Republic of Armenia



Comprehensive		Core	
	Road / Completed		Ports
	Road / To be upgraded		RRT
	Road / Planned		Airports



**15.5** Indicative maps of the core network in Azerbaijan, railways  
 Comprehensive Network: Railways, ports, rail-road-terminals and airports  
 Core Network: Railways, ports, rail-road-terminals and airports  
**Eastern Partnership Transport Network: Azerbaijan**



Comprehensive Core		Comprehensive Core		Comprehensive Core	
	Conventional rail / Completed		High speed rail / Completed		Airports
	Conventional rail / To be upgraded		To be upgraded to high speed rail		Ports
	Conventional rail / Planned		High speed rail / Planned		RRT



**15.6** Indicative maps of the core network in Azerbaijan, roads  
 Comprehensive & Core Networks: Roads, ports, rail-road terminals and airports  
**Eastern Partnership Transport Network: Azerbaijan**



Comprehensive		Core		Comprehensive		Core		Comprehensive		Core	
	Road / Completed		Road / To be upgraded		Ports		RRT		Airports		
	Road / Planned										



**15.7** Indicative maps of the core network in Georgia, railways  
 Comprehensive Network: Railways, ports, rail-road-terminals and airports  
 Core Network: Railways, ports, rail-road-terminals and airports  
**Eastern Partnership Transport Network: Georgia**



Comprehensive Core		Comprehensive Core		Comprehensive Core	
	Conventional rail / Completed		High speed rail / Completed		Airports
	Conventional rail / To be upgraded		To be upgraded to high speed rail		Ports
	Conventional rail / Planned		High speed rail / Planned		RRT



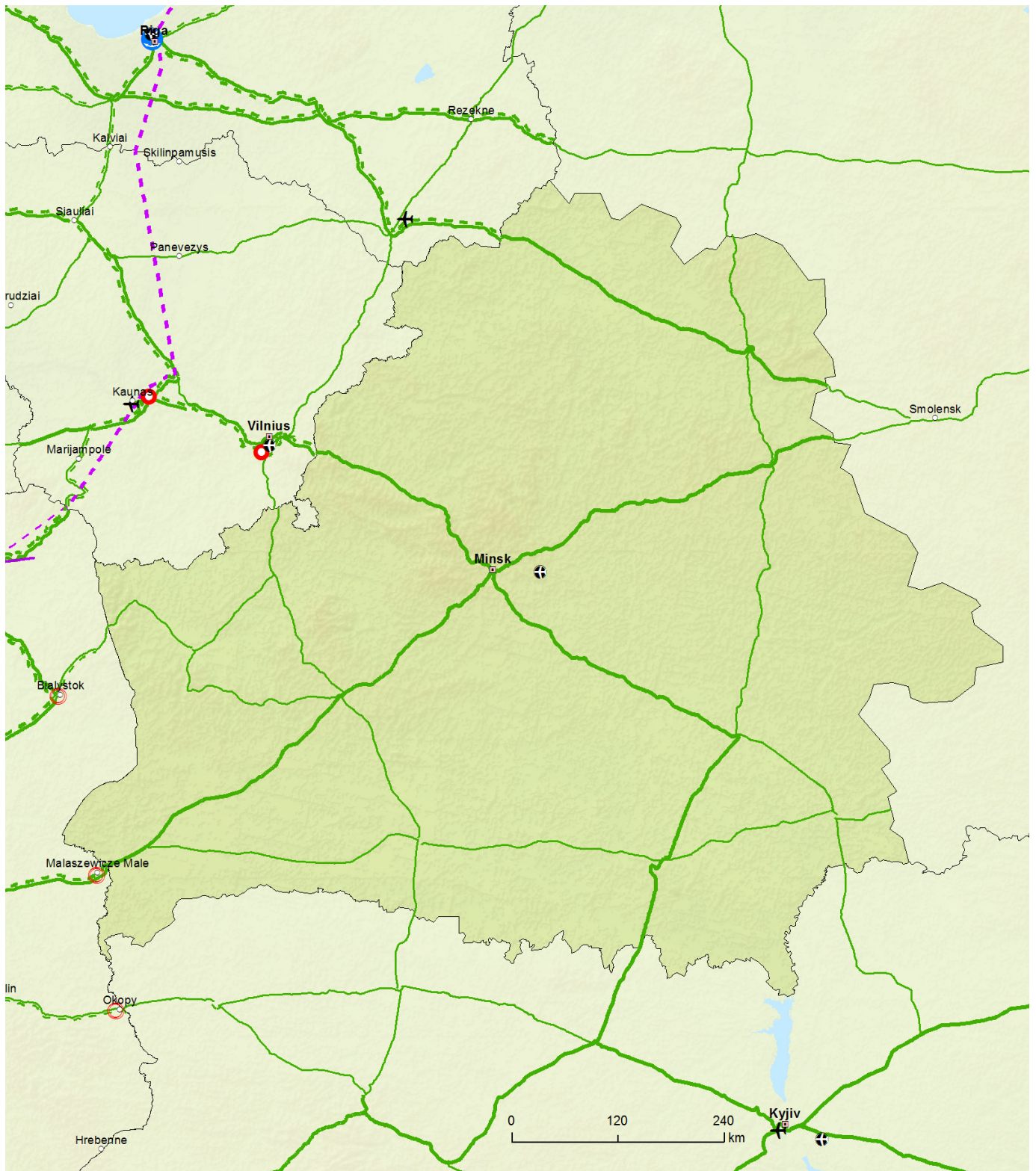
**15.8** Indicative maps of the core network in Georgia, roads, roads  
 Comprehensive & Core Networks: Roads, ports, rail-road terminals and airports  
**Eastern Partnership Transport Network: Georgia**



Comprehensive		Core	
	Road / Completed		Ports
	Road / To be upgraded		RRT
	Road / Planned		Airports



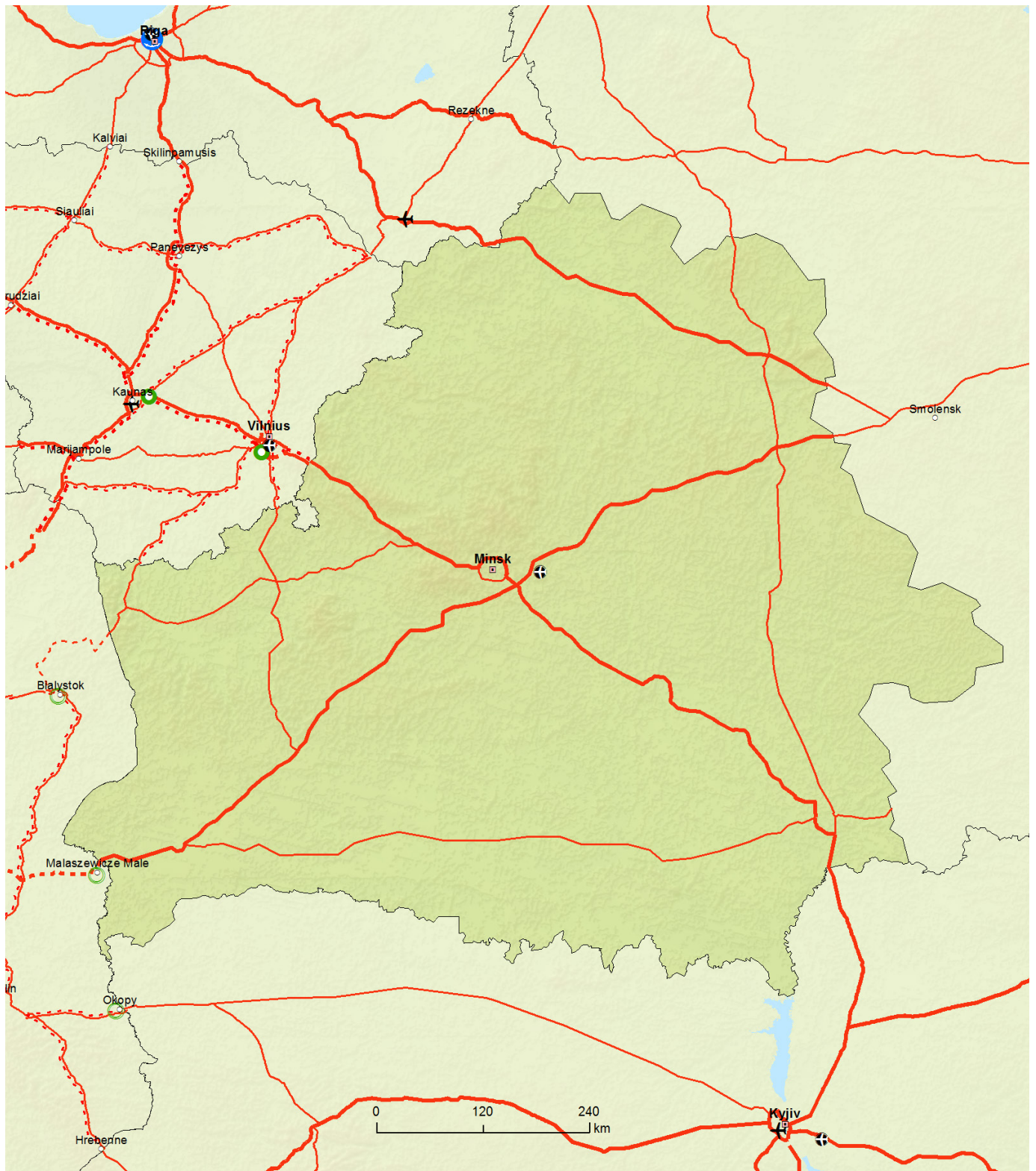
**16.3** Indicative maps of the core network in Belarus, railways  
 Comprehensive Network: Railways, ports, rail-road-terminals and airports  
 Core Network: Railways, ports, rail-road-terminals and airports  
**Eastern Partnership Transport Network: Belarus**



Comprehensive Core		Comprehensive Core		Comprehensive Core	
	Conventional rail / Completed		High speed rail / Completed		Airports
	Conventional rail / To be upgraded		To be upgraded to high speed rail		Ports
	Conventional rail / Planned		High speed rail / Planned		RRT



**16.4** Indicative maps of the core network in Belarus, roads, roads  
 Comprehensive & Core Networks: Roads, ports, rail-road terminals and airports  
**Eastern Partnership Transport Network: Belarus**

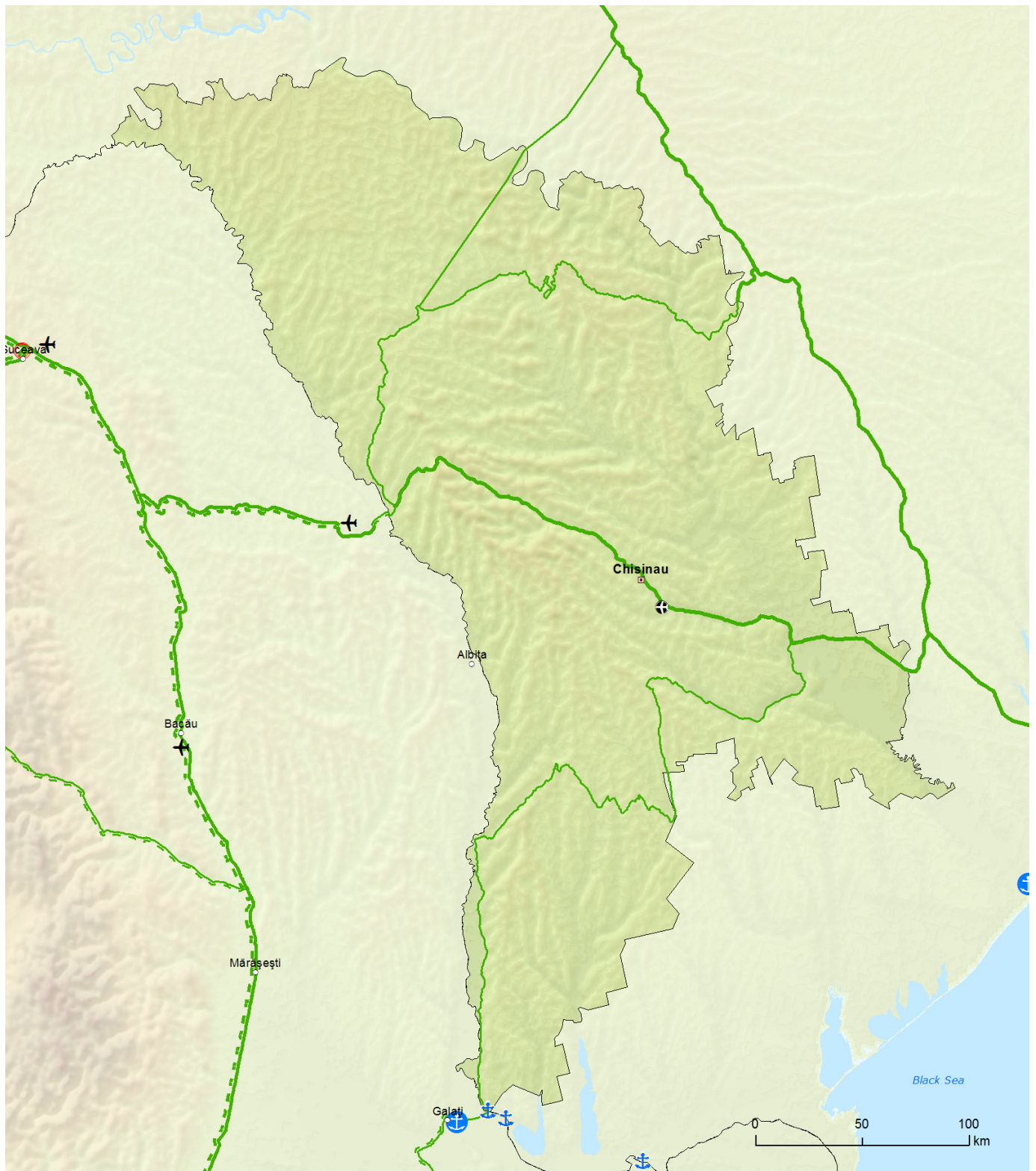


Comprehensive		Core	
	Road / Completed		Ports
	Road / To be upgraded		RRT
	Road / Planned		Airports





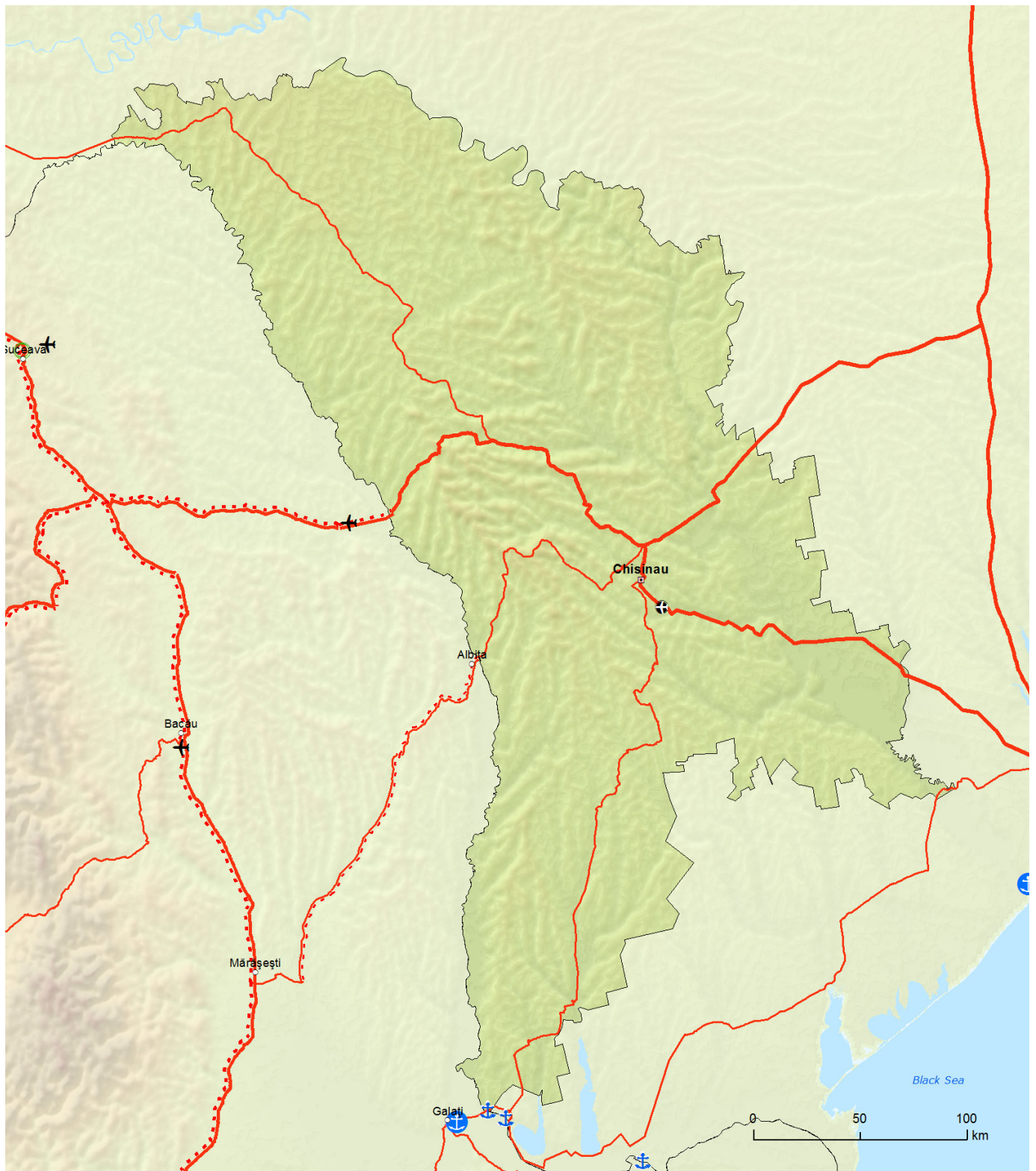
**16.5** Indicative maps of the core network in the Republic of Moldova, railways  
 Comprehensive Network: Railways, ports, rail-road-terminals and airports  
 Core Network: Railways, ports, rail-road-terminals and airports  
**Eastern Partnership Transport Network: Republic of Moldova**



Comprehensive Core		Comprehensive Core		Comprehensive Core	
	Conventional rail / Completed		High speed rail / Completed		Airports
	Conventional rail / To be upgraded		To be upgraded to high speed rail		Ports
	Conventional rail / Planned		High speed rail / Planned		RRT



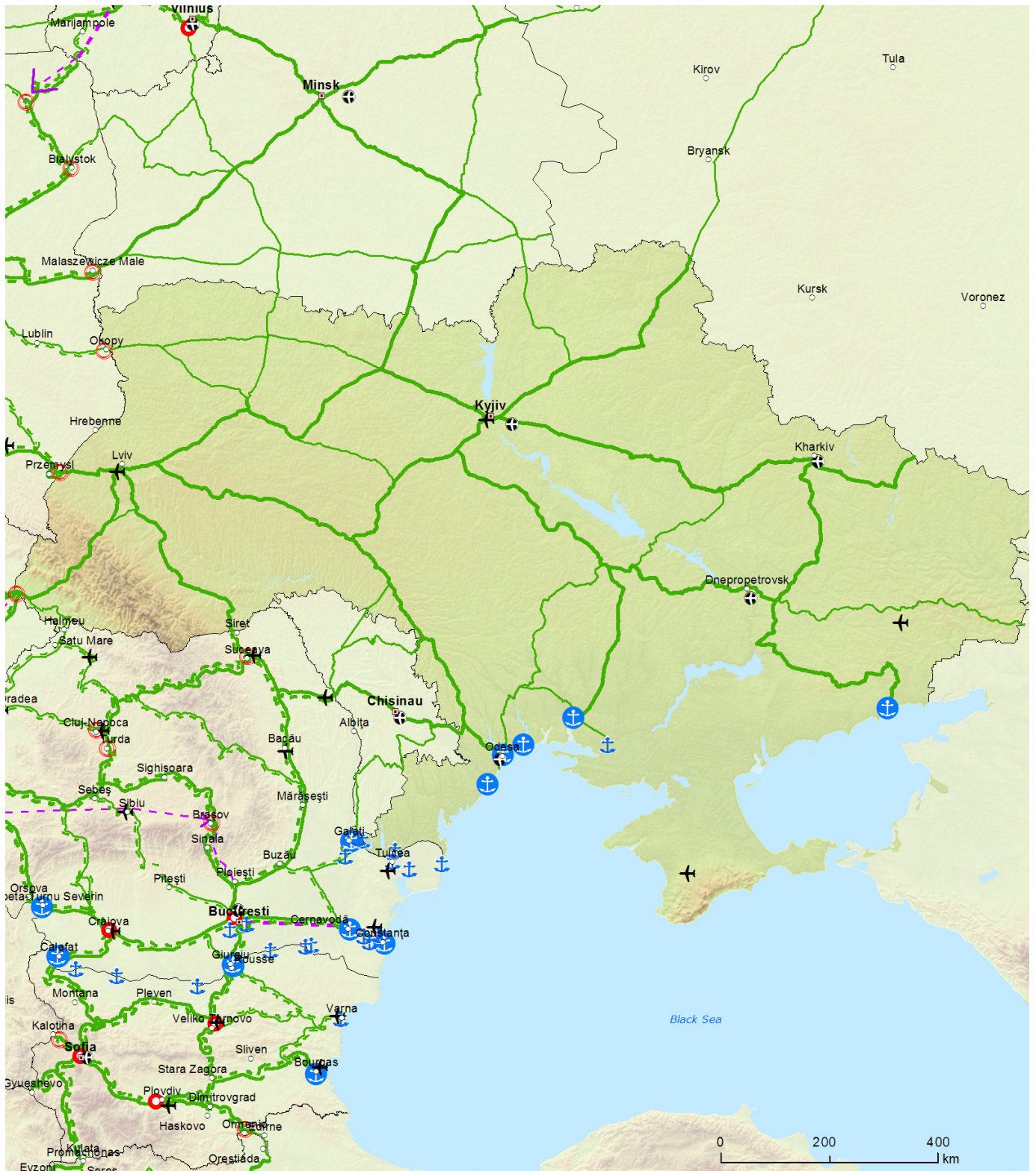
**16.6** Indicative maps of the core network in the Republic of Moldova, roads  
 Comprehensive & Core Networks: Roads, ports, rail-road terminals and airports  
**Eastern Partnership Transport Network: Republic of Moldova**



Comprehensive		Core	
	Road / Completed		Ports
	Road / To be upgraded		RRT
	Road / Planned		Airports



**16.7** Indicative maps of the core network in Ukraine, railways  
 Comprehensive Network: Railways, ports, rail-road-terminals and airports  
 Core Network: Railways, ports, rail-road-terminals and airports  
**Eastern Partnership Transport Network: Ukraine**



Comprehensive Core		Comprehensive Core		Comprehensive Core	
	Conventional rail / Completed		High speed rail / Completed		Airports
	Conventional rail / To be upgraded		To be upgraded to high speed rail		Ports
	Conventional rail / Planned		High speed rail / Planned		RRT



**16.8** Indicative maps of the core network in Ukraine, roads  
 Comprehensive & Core Networks: Roads, ports, rail-road terminals and airports  
**Eastern Partnership Transport Network: Ukraine**



Comprehensive		Core	
	Road / Completed		Ports
	Road / To be upgraded		Airports
	Road / Planned		RRT