

**Republic of Belarus
Eastern Partnership Priority Projects
Sector – Road**

**Head of road maintenance and motorway service Unit of the road
network Department
Ministry of Transport and communications
Republic of Belarus
SERGEY LEONCHIK**

Brussels 2016

Trans-European corridors passing through the territory of the Republic of Belarus



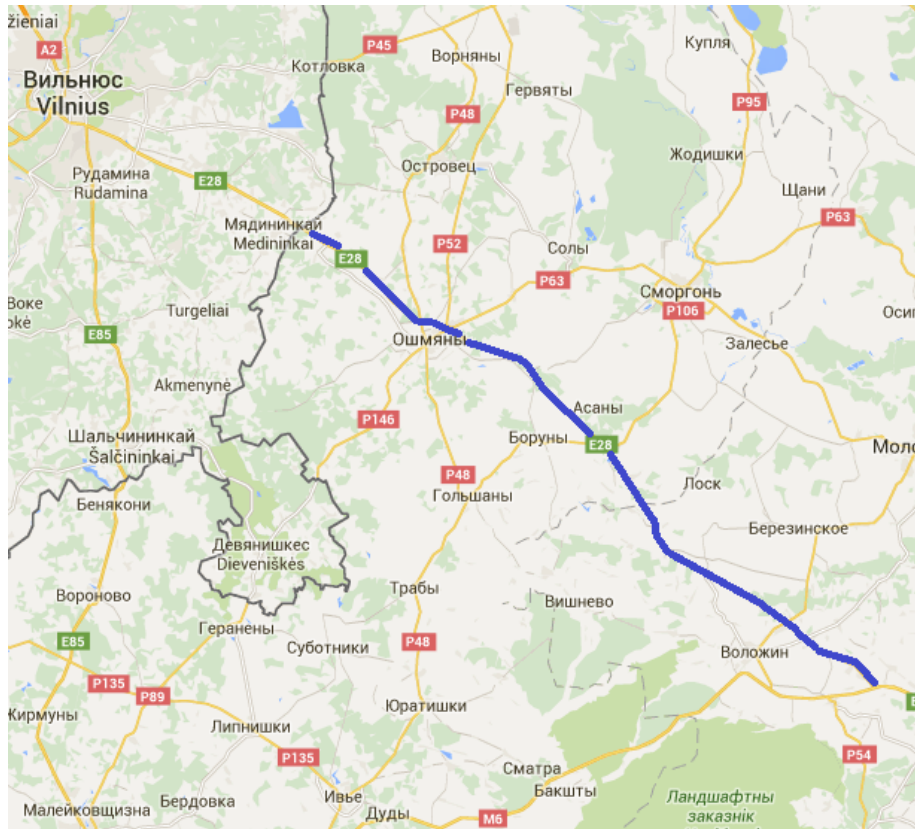
Trans-European corridors passing through the territory of the Republic of Belarus



Two main projects.

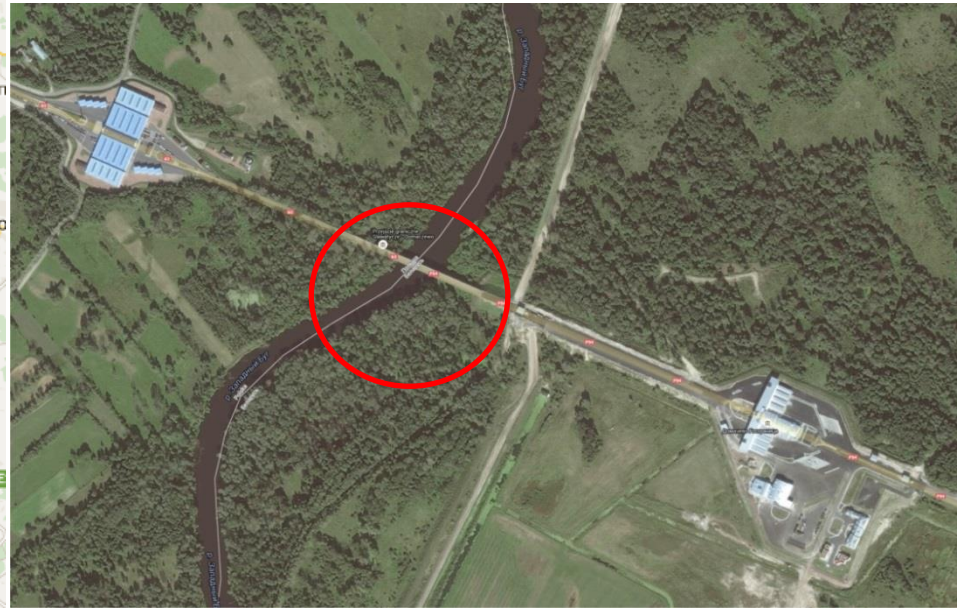
#1

Upgrade of road between Minsk
and Vilnius.

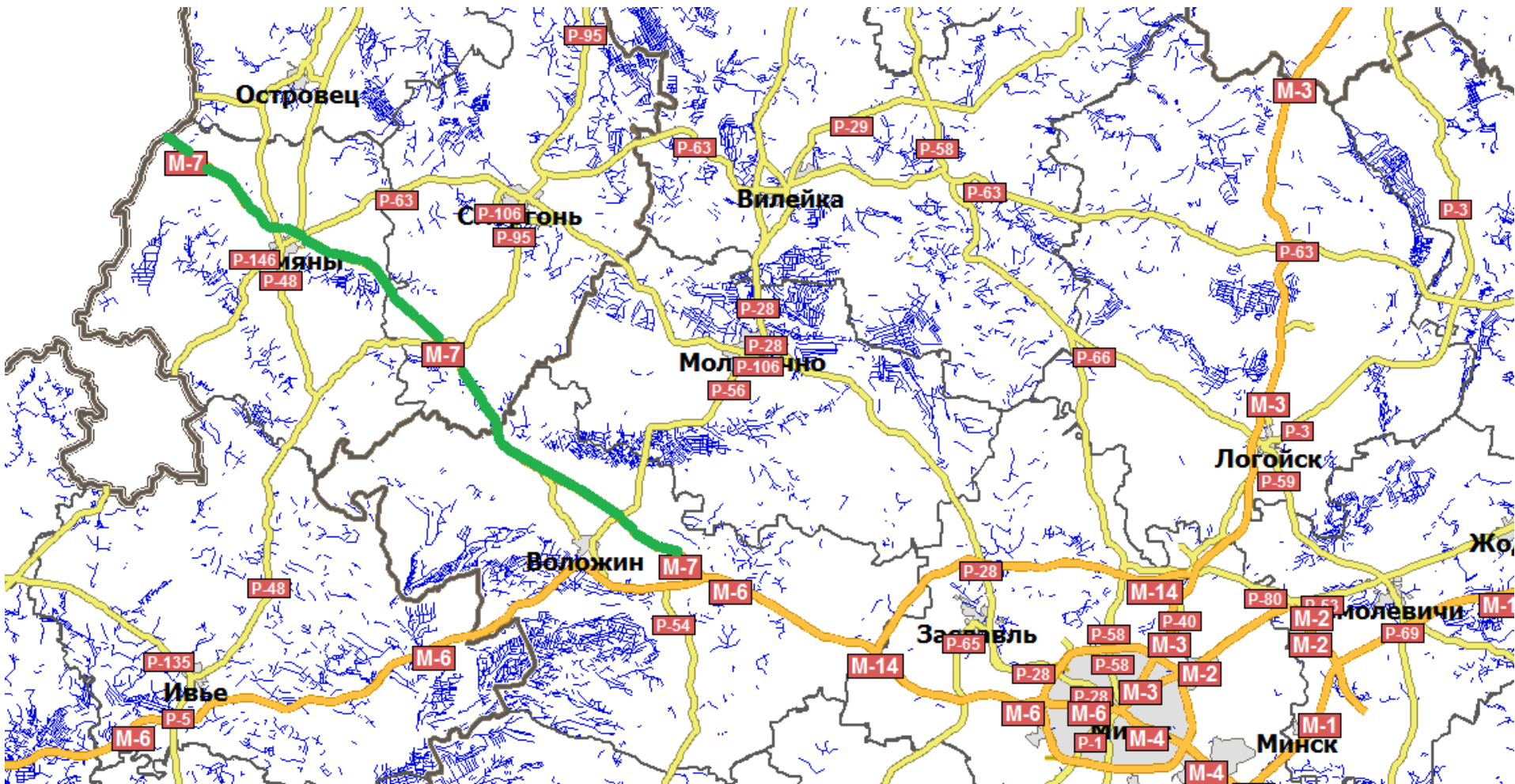


#2

Construction of a bridge across the
river Zapadny Bug (Western Bug)
at the road checkpoint Domachevo
(Slovatichi).



#1 Road M-7/E 28 Minsk – Asmiany – border of the Republic of Lithuania (Kamenny Log) from km 57,6 to km 148,752


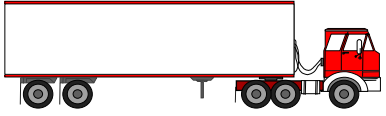



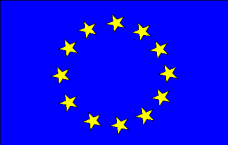
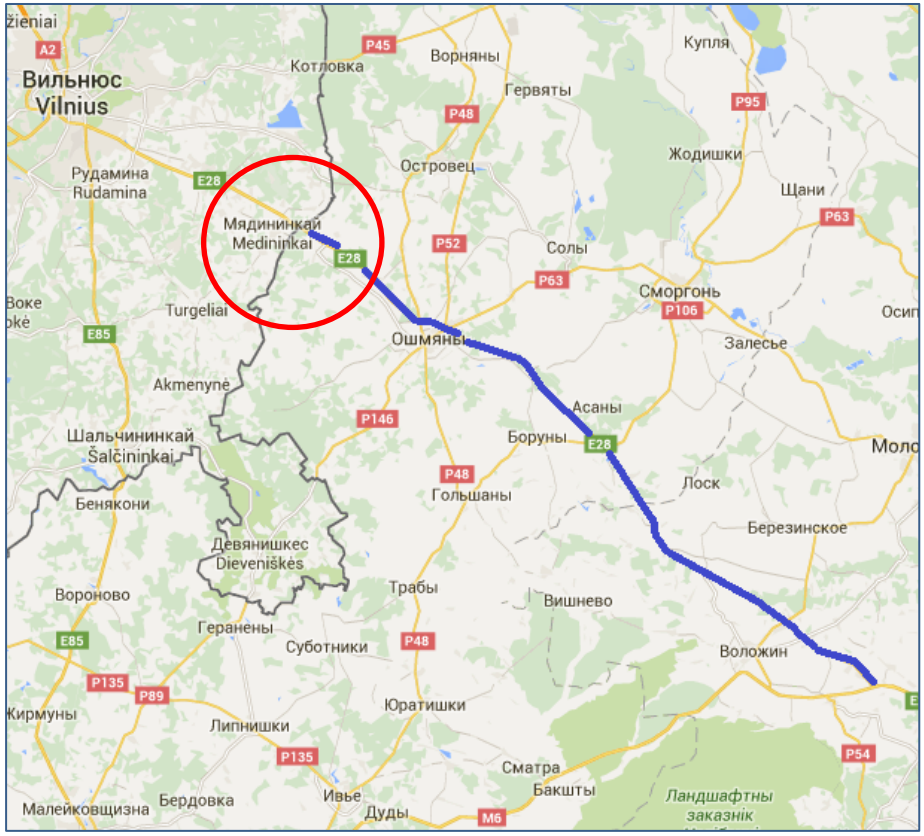
The estimated project cost - 300 mln USD

length - 89 kilometers

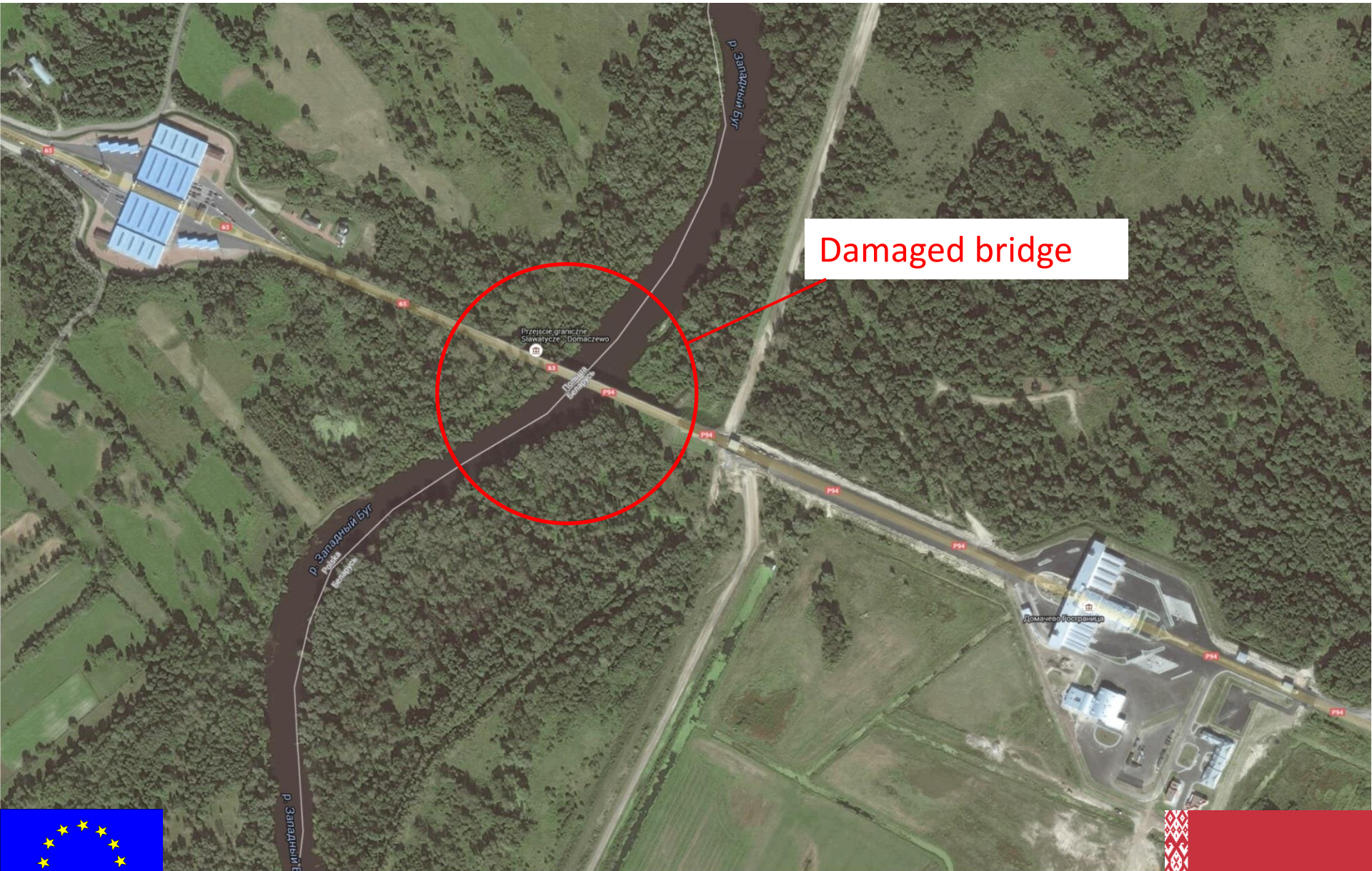


Kamenny Log

| | |
|--|--------------------------------|
|  | 1000 passenger cars/day |
|  | 1000 lorries/day |
|  | 60 buses/day |



#2 Construction of a bridge across the river Zapadny Bug (Western Bug) at the road checkpoint Domachevo (Slovatichi).



Defects



Bridge across the river Zapadny Bug (Western Bug) at the road checkpoint Domachevo (Slovatichi).



Damaged bridge



**Head of road maintenance and motorway service Unit of the road
network Department
Ministry of Transport and communications
Republic of Belarus
SERGEY LEONCHIK
leonchik.s@mintrans.mtk.by**

Thank you!

